

Idridgehay & Alton and Ashleyhay Neighbourhood Development Plan Referendum 2015

Information for voters

This page is intentionally blank

About this booklet

On 15 October 2015, there will be a referendum on a neighbourhood development plan (usually known as the Neighbourhood Plan) for your area. The Neighbourhood Plan has been produced by Idridgehay & Alton and Ashleyhay Parish Council. In this booklet you can find out about:

- The referendum and how you can take part and;
- Where to find help in making your decision

Referendum on the Neighbourhood Plan

A referendum asks you to vote 'Yes' or 'No' to a question. For this referendum you will receive a ballot paper with the question:

Do you want Amber Valley Borough Council to use the neighbourhood plan for Idridgehay & Alton and Ashleyhay to help it decide planning applications in the neighbourhood area?

How do I vote in the referendum?

You vote by putting a cross (x) in the 'Yes' or 'No' box on your ballot paper/ Put a cross in only one box or your vote will not be counted.

If more than 50% of people vote 'Yes' in this referendum, then Amber Valley Borough Council will use the Neighbourhood Plan as part of planning process to help it decide planning applications in the neighbourhood area.

If 50% or more people vote 'No', the planning application will be decided without using the Neighbourhood Plan.

Can I vote?

You can vote in the referendum if:

- You are registered to vote in local elections;
- The address at which you are registered to vote in a local election, as shown in the register of electors, is in the Referendum Area (see map below), (assuming that you are entitled to be registered at this address); and
- You are 18 years of age or over on 15 October 2015

You have to be registered to vote by 29 September 2015 to vote in the referendum. You can check if you are registered to vote by calling our Helpline on 01773 841632/841458.

The referendum will be conducted based on procedures which are similar to those used at local government elections.

Ways of voting

There are three ways of voting:

1. In person on 15 October 2015:

- At your local polling station. It is easy and a member of staff will always help if you are not sure what to do
- In the Idridgehay & Alton and Ashleyhay parish the polling stations are listed on page 8
- You will receive a poll card confirming your polling station for this referendum
- If you do not receive your poll card, you can contact our helpline on 01773 841632/841458 or email us on elections@ambervalley.gov.uk to find out if you are included on the register and to find out where your polling station is
- Polling stations are open from 7.00am to 10.00pm

2. By post:

- If you have a postal vote already, you will receive a poll card confirming this
- If you want to vote by post, you will need to complete an application form and send it to the Election Team to arrive by 30 September 2015 at this address: Amber Valley Borough Council, Town Hall, Ripley, Derbyshire, DE5 3BT
- Postal votes can be sent overseas but you need to think about whether you will have time to receive and return your completed postal vote by 15 October 2015.
- You should receive your postal vote about a week before polling day. If it doesn't arrive in time, you can ask for a replacement up to 5pm on 15 October 2015 by contacting our Helpline on 01773 841632/841458

3. By Proxy:

- If you have a proxy vote already, you will receive a poll card confirming this
- If you can't get to the polling station and don't wish to vote by post, you may be able to vote by proxy, this means allowing somebody that you trust to vote on your behalf.
- If you want to vote by proxy, you will need to complete an application form and send it to the Elections Team to arrive by 7 October 2015 at this address: Amber Valley Borough Council, Town Hall, Ripley, Derbyshire, DE5 3BT
- When you apply for a proxy vote, you must say why you cannot in person
- Anyone can be your proxy as long as they are eligible to vote and are willing to vote on your behalf. You will have to tell them how you want to vote.
- Postal and proxy vote application forms are available from our Helpline on 01773 841632/841458 our website www.ambervalley.gov.uk or by emailing elections@ambervalley.gov.uk

Am I registered to vote?

If you're not registered, you won't be able to vote. You can check if you are registered by calling our Helpline on 01773 841632/841458 or emailing elections@ambervalley.gov.uk

If you are not registered to vote, you can do this by going online at www.gov.uk/register tovot e. The last date you can register for this election is 29 September 2015. If you are unable to register yourself online, call the Helpline on 01773 841632/841458 and the elections team can do this for you. You will need to provide your date of birth and National Insurance Number when you register.

Referendum Expenses

Expenses can be incurred by an individual or body during the period of the referendum for referendum purposes only.

The referendum expenses limit that will apply in relation to this referendum is £2384.24 the number of persons entitled to vote in the referendum by reference to which the limit has been calculated is :ldridgehay & Alton and Ashleyhay = 377 as at 1 August 2015.

Helping you make a decision on how to vote

The Council is require to publish a number of documents (the Regulations call them 'specified documents') that will help you to make a decision on how to vote. A copy of all these 'specified documents' may be inspected at:

Town Hall, Market Place, Ripley, DE5 3BT	9am-4:30pm Mon, Tues, Thurs & Fri 10am-4:30pm Wed
Idridgehay Village Store, Wirksworth Road, Idridgehay, Near Belper, DE56 2SB	8am-6pm Mon - Sat
Belper Library, Bridge Street, Belper, DE56 1BA	9am-5pm Mon, Wed & Fri 9am-7pm Tues & Thursday 9pm-4pm Sat
Wirksworth Library, Town Hall, Wirksworth, Matlock DE4 4EU	Closed Mon 9am-1pm & 2pm-7pm Tues Closed Wed 9am-1pm & 2pm-5pm Thurs & Fri 9am-1pm Sat

The 'specified documents' are:

- The Idridgehay & Alton and Ashleyhay Neighbourhood Plan
- Report of the Independent Examiner
- Summary of the representations submitted to the Independent Examiner
- An Information Statement that sets out general information about town and country planning including neighbourhood planning and the referendum
- A statement confirming the Local Planning Authority are satisfied the plan meets the 'basic conditions' and complies with the provision made by or under sections 38A and 38B of the 2004 act.

All the above documents can be viewed on Amber Valley Borough Council's website at www.ambervalley.gov.uk

The 'Basic Conditions'

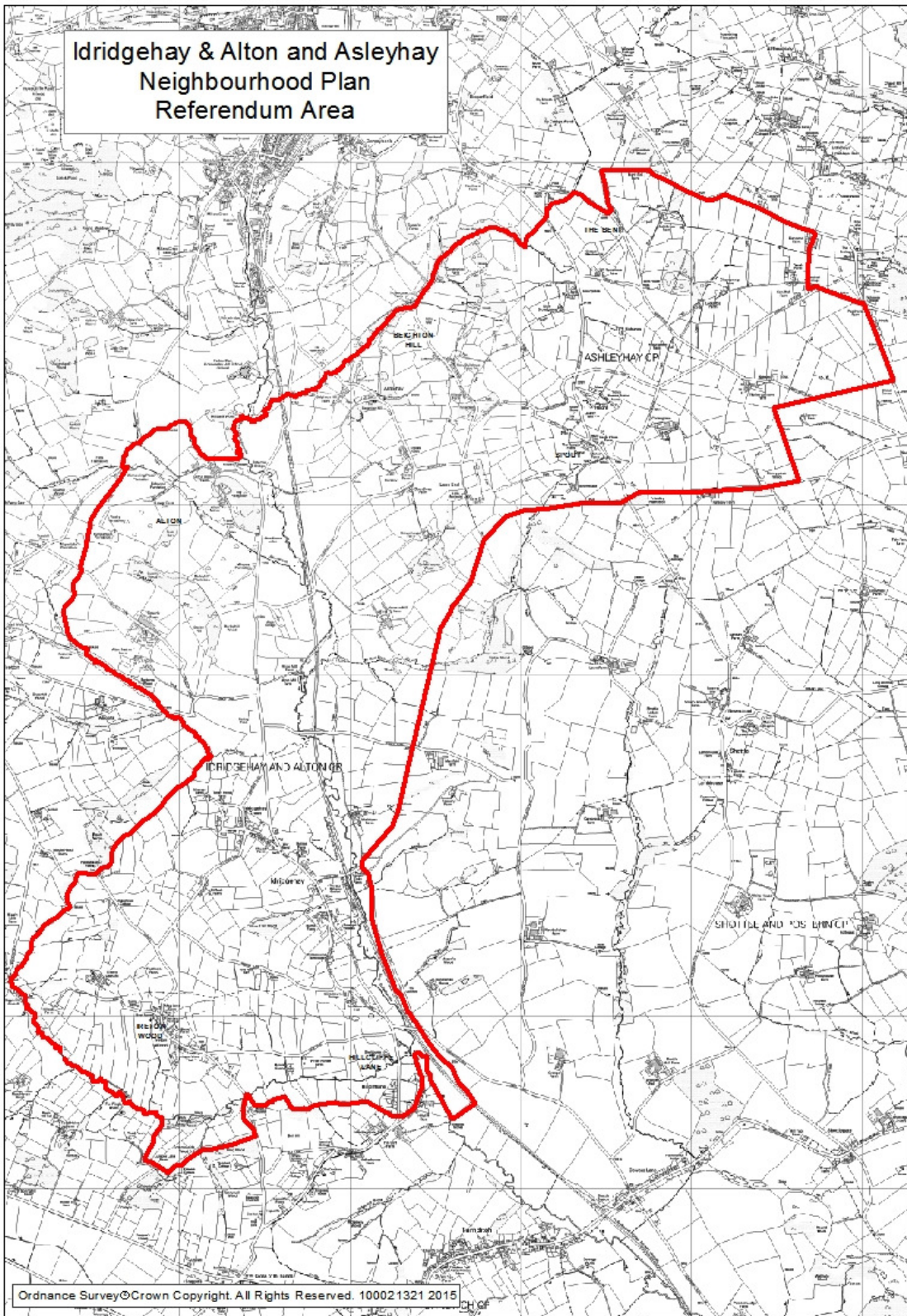
The Neighbourhood Plan must meet all the following conditions if it is to be considered for referendum:

1. Has regard to national policy and guidance from Secretary of State;
2. Contributes to sustainable development
3. Is in general conformity with the strategic policy of the development plan for the area or any part of that area;
4. Does not breach, or is otherwise compatible with, EU obligations – this includes the Strategic Environmental Assessment Directive of 2001/42/EC and compatibility with Convention rights, within the meaning of Human Rights Act 1998; and
5. The making of the Neighbourhood Plan is not likely to have a significant effect on a European Site as defined in the Conservation of Habitats and Species Regulations 2010(d) (either alone or in combination with other plans or projects).

How to find out more

You can find specific documents on the Idridgehay & Alton and Ashleyhay Neighbourhood Plan at www.ambervalley.gov.uk . For more information about voting and the arrangements for this referendum please contact our Helpline on 01773 841632/841458 or email elections@ambervalley.gov.uk

Idridgehay & Alton and Ashleyhay Boundary



Referendum Polling Stations

Idridgehay & Alton and Ashleyhay

1. St. James Church (ATI & ATS)
Cliffash Lane
Idridgehay
Belper, DE56 2SJ