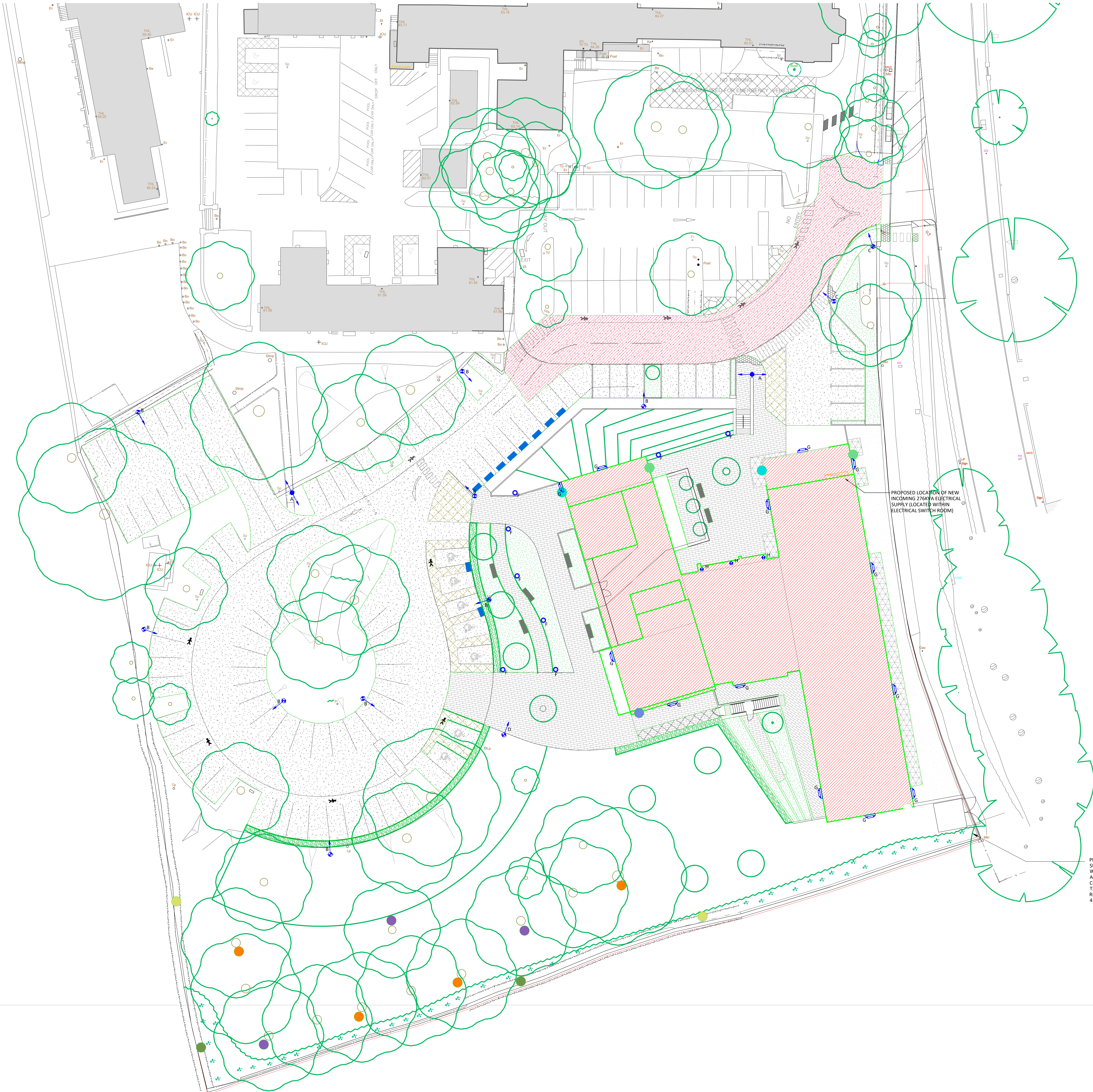


LIGHTING KEY	
	A
	B
	C
	D
	F
	G
	H



PROPOSED LOCATION OF 800KVA SUBSTATION PROVIDED BY WESTERN POWER, 24HOUR ACCESS REQUIRED. PROPOSED TO CREATE ENTRANCE ACCESS OFF THE ACCESS ROAD ADJACENT. REQUIRED AREA FOR SUBSTATION 4.2M X 4.2M

Notes

Revisions

Rev.	Date	Int.	Description
P04	22.04.22	JH	Lighting Column Position Updated
P03	22.04.22	JH	Lighting Column Positions Updated
P02	07.04.22	JH	Substation options added
P01	03.03.22	JH	Updated to new layout

Electrical, Mechanical, Heating Consulting Engineers
Alpine House, Alpine Street, Old Basford, Nottingham NG6 0HS
Tel. 0115 924 4433 Fax. 0115 924 4438
E-mail - enquiries@epconsulting.co.uk

Client
Derbyshire Community Health Service

Job Title
Belper Health Centre

Drawing Title
Proposed External Lighting Layout

Scale
1 : 200

Date
March 2022

Status
PRELIMINARY

Dwg. No.
A5157-EPC-00-DR-E-SO-0001