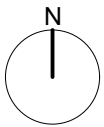


NOTES
This drawing is the property of FPCR Environment and Design Ltd and is issued on the condition it is not reproduced, retained or disclosed to any unauthorised person, either wholly or in part without written consent of FPCR Environment and Design Ltd.
Ordnance Survey base mapping - supplied by client.



KEY

Softworks:

- Existing Retained Vegetation with RPA
(see Arb drawing 8927-T-04 Tree Protection Plan)
- Existing Vegetation to be removed
(see Arb drawing 8927-T-04 Tree Protection Plan)
- Native Woodland Edge Mix
(to reinforce proposed earthworks, provide privacy and protect/discourage access to biodiversity protection zones/ feathered trees to include stake support)
- Native tree Mix
- Native Shrub Mix
- Standard Trees - Large Growing
- Standard Trees - Medium Growing
- Standard Trees - Small Growing
- Single Species Native Hedgerow
(to be planted in a single row, 3 plants 1m)
- Amenity Planting Beds
(Single species groups of 3.5 or 7)
- Individual Amenity Plants / Specimen Shrubs
(to be set out as shown on drawing)
- Native Marginal/Aquatic Planting
- Bulb Planting
(to be mixed Narcissus bulbs)
- Amenity Grass Mix
(to be Emorsgate EG22C 'Strong Lawn Mixture with Clover' or similar approved)
- Shade Tolerant Grass Mix
(to be Emorsgate EV1 'Hedgerow Mixture' or similar approved. Woodland walk to be maintained as a 'mown ride' if footfall doesn't keep grass growth in check.)
- Tussock Grass Mix
(to be Emorsgate EG10 'Tussock Grass Mixture' or similar approved)
- Flowering Meadow Grass Mix
(to be Emorsgate EM1 'Basic General Purpose Meadow Mixture' or similar approved)
- Flowering Lawn Mix
(to be Emorsgate EL1 'Flowering Lawn Mixture' or similar approved)
- Wetland Grass Mix
(to be Emorsgate EM8 'Meadow Mixture for Wetlands' or similar approved)

Hardworks:

- Low Knee Rail Fence WXD-25
(For fencing arrangement see Architect's drawing BDS/PL11)
- 1.2m Post and Rail Fence WXD-02A
(For fencing arrangement see Architect's drawing BDS/PL11)
- Stream Boulders
(see notes on boulder specification and location)
- Play Boulders
(see notes on boulder specification and location)
- Bench
(to be Broxap Hatten Rustic Four Slat or similar approved. Treated softwood. Bench to be firmly fixed using concrete footings. Broxap Ref: BX17 4055)
- Areas of Gravel
(include a range of stone and aggregate sizes in order to provide an attractive feature to stream corridor. Material should also serve to protect bank sides that could be subject to erosion due to site levels. Drainage engineer to confirm detailed design)
- Play Equipment
(see Play equipment Schedule on drawing 8927-L-04, dashed line denotes manufacturers critical fall height boundary)
- Top of Slope/Bottom of Slope
- Areas to be wet/semi wet with standing water for ecological purposes

L	23/12/2022	Updates to levels and planting	EMA/SGL
K	10/10/2022	Updated to client comments	PJM/SGL
J	28/09/2022	Updated Arb	PJM/SGL
L	07.04.2020	First Issue	CC / SGL
rev	date	description	dm / chkd



masterplanning
environmental assessment
landscape design
urban design
ecology
architecture
arboriculture

FPCR Environment and Design Ltd
Lockington Hall
Lockington
Derby DE74 2RH

t: 01509 872772
f: 01509 874566
e: mail@fpcr.co.uk
w: www.fpcr.co.uk

client
Wheeldon Brothers

project
**Derwentside Industrial Park,
Belper**

drawing title
**LANDSCAPE PROPOSALS
GENERAL ARRANGEMENT**

scale
1:500 @ A1

drawn / checked
OFD / SGL

revision date
23 December 2022

drawing number

8927-L-02

L

File: \\FPCR-FS-01\\EarlyWork\\8900\\8927\\LANDS\\Plans\\8927-L-02-Landscape Proposals General Arrangement.rvt