

Area Profile: Codnor & Waingroves

Key Characteristics

Population: 4,847

Households: 2,072

Hectares: 532

Population Density: 9.1
people/hectare

Source:
2011 Census



Spatial Outline

Codnor and Waingroves area is situated between the market towns of Ripley and Heanor. The area is approximately 12 miles from the City of Derby and 14 miles from Nottingham, with the A610 providing a useful link to these areas and others in the country via the M1 and A38. Codnor and Waingroves, is a mix of urban and rural settlements, and is a former mining community, which is located in a semi-rural area. In recent years, the village has had traffic problems, especially in the rush hour, and traffic coming into Codnor can sometimes be at a complete standstill. This is because the A610 (the main road to/from Nottingham) goes through Codnor, carrying traffic to Ripley, and further places such as Matlock.

Improving Places and Meeting Community Needs

Local Area: The Codnor and Waingroves area covers 532 hectares of land to the east of the borough.

Population Density: The population density of the area is 9.1 people / hectare, higher than the Borough average of 4.6 people / hectare. Most of its population is concentrated in the village of Codnor.

Households: There are 2,072 households in the area.

Age: 40% of the population is aged between 30 –59 years of age and 20% is aged between 60-74 years of age; this is reflective of the age profile of the Borough. There are slightly fewer children and slightly more over 60s in the area compared to the Amber Valley average.

Figure 1: Age of Population

<i>(percentages)</i>	<i>Codnor and Waingroves</i>	<i>Amber Valley</i>
0 – 17 years	17.5%	20.1%
18 – 29 years	12.9%	12.6%
30 – 59 years	40.2%	41.2%
60 – 74 years	20.4%	17.7%
75 + years	8.8%	8.4%

Source: 2011 Census

Religion: 64% of people residing in Codnor and Waingroves are of Christian belief followed by 27% stating they have no beliefs, reflecting the Borough average. (Source: 2011 Census)

Country of Birth: Over 96% of the people living in Codnor and Waingroves were born in England with 1.5% born elsewhere in the UK. (Source: 2011 Census)

Ethnicity: The people living in Codnor & Waingroves are predominantly White (99.1%) with a small but diverse proportion of ethnic minorities residing in the area. (Source: 2011 Census)

Household Composition: The household composition of Codnor and Waingroves is very similar to that of the Borough. The largest household type comprises *married/civil partnership couples with no children* (16%). However, single person households account for 27% of all households.

Figure 2: Household Composition

Household Type (percentages)	Codnor & Waingroves	Amber Valley
Total Households (number)	2,072	52,596
1 person Aged 65+	12.3%	12.8%
1 person other	14.9%	15.1%
Family all aged 65+	9.9%	9.6%
Family, married/civil - no children	16.1%	15.4%
Family, married/civil - dependent children	13.1%	15.4%
Family, married/civil - all children non-dep.	9.2%	6.3%
Family, Cohabiting - no children	5.6%	6.4%
Family, Cohabiting - dep. children	4.2%	4.7%
Family, Cohabiting - non-dep. children	0.8%	0.6%
Lone parent - dependent children	5.2%	5.8%
Lone parent - non-dependent children	3.8%	3.4%
Other households - with dependent children	2.0%	1.7%
All student	0%	0%
All aged 65 and over	0.9%	0.3%
Other	2.6%	2.8%

(Source: 2011 Census)

Service Provision

Shopping Services: There is a moderate retail provision with a number of local shops for convenience & comparison shopping, including a Tesco Express.

Major Food Store: 0

Nearest: Sainsbury's, Butterley Park, Ripley.

Market: 0

Post Offices: 0

Nearest: Derby Road, Ripley.

Pharmacy: 1

Holme Field Chemist, 1 High Street, Codnor, Ripley

Dentists: 0

Nearest: Ripley Family Dental Care, 14 Derby Road, Ripley

GP Surgeries: 0

Nearest: Ivy Grove Surgery, Church Farm, Primary Care Centre, Steeple Drive, Ripley

Community Clinics: 0

Hospital: 0

Nearest: Ripley Hospital, Sandham Lane Ripley.

A&E Hospital: 0

Nearest: Kings Mill Hospital, Mansfield and Queen's Medical Centre, Nottingham.

Infant School: 0

Junior School: 0

Primary School: 2

Codnor Community Primary School; Waingroves Primary School

Secondary School: 0

Nearest: Mill Hill School, Peasehill, Ripley

Colleges: 0

Universities in locality:

Nottingham Trent University, Nottingham University and Derby University.

Adult Education: 1

Peverel House Adult Community Education Service, Mill Lane, Codnor

Places of Worship: 2

St James, Crosshill/Denby Lane; Waingroves Methodist, Church Street.

Restaurants and Cafes:

There are two restaurants and a small range of takeaways.

Job Centres: 0

Nearest: Heanor

Child Care:

Play Group 1

Nursery School 1

Childminders 3

Out of school Care 1

Sure Start: 0

Nearest: Ripley Children's Centre & Langley Mill Children's Centre

Safer Communities

Anti-social Behaviour and Crime Rates:

The incidence of crime in Codnor & Waingroves is generally below the Borough average, particularly in incidents of theft and burglary. However rates of criminal damage and arson are above the Borough average. The area is experiencing fairly high levels of anti-social behaviour, although this is still lower than the Borough average.

Figure 3: Anti-social Behaviour and Crime Rates

<i>(Rate / 1000 people)</i>	<i>Codnor & Waingroves Area</i>	<i>Amber Valley</i>	<i>Area Rank (1=worst)</i>
Anti Social Behaviour	38	41.3	10 th
Criminal damage / arson	9.3	8.3	9 th
Theft / burglary	15	24.1	14 th
Violence with injury	2.7	3.8	9 th
Violence without injury	3	2.9	8 th
Public disorder	0.2	0.6	12 th
Drug Offences	2.7	2.5	9 th
Shoplifting	2.7	4.6	9 th

Source: Safer Derbyshire Research & Information Team, Derbyshire County Council Jan-Dec 2013

Housing

Figure 4: House Affordability

Borrowing ratio 95% house price to average income	
Codnor and Waingroves	3.9
Amber Valley	4.2

Source: CACI Paycheck 2013 and Zoopla 2014

Figure 5: Average House Prices

<i>Area</i>	<i>Detached</i>	<i>Semi-detached</i>	<i>Terraced</i>	<i>Flat / maisonette</i>	<i>Average</i>
Codnor	£174,219	£114,039	£84,906	£100,934	£126,321
Waingroves	£155,603	£118,819	£86,521	-	£124,626
Amber Valley	£223,995	£124,930	£96,841	£122,389	£151,011

Source: Amber Valley figures <http://news.bbc.co.uk/> based on April-June 2013 sales.

Source for others: <http://www.zoopla.co.uk> showing average current value Feb 2014

House Prices: The average house price in Codnor and Waingroves is 17% lower than the average house price for the Borough.

Tenure: The majority (78.4%) of people own their own property, followed by private rented, reflective of the borough. However slightly fewer people socially rent their property in Codnor and Waingroves compared to the average number of people in the Borough.

Figure 6: Tenure

<i>(percentage)</i>	<i>Condor and Waingroves</i>	<i>Amber Valley</i>
Owned (outright)	43.1%	38.2%
Owned (mortgage/loan)	35.3%	35.9%
Shared ownership	0.2%	0.4%
Social rented (LA)	4.1%	5.1%
Social rented (other)	5.7%	7.2%
Private rent	1.4%	11.8%
Living rent free	1.0%	1.4%

Source: 2011 Census

Homelessness: In the financial year 2011/12 there were no priority need applicants from the Codnor / Waingroves area, but 16 applicants approached the service for advice. (Source: Amber Valley Borough Council Housing section data.)

Dwelling Type: The majority of dwellings in the area are semi-detached, slightly higher than the average for the Borough, followed by detached and terraced housing.

Figure 7: Dwelling Type

<i>(percentage)</i>	<i>Codnor and Waingroves</i>	<i>Amber Valley</i>
Detached	33.9%	35.8%
Semi-detached	42.0%	36.5%
Terraced	19.2%	20.9%
Flat/maisonette/apartment	4.9%	6.6%
Caravan/Temporary Other	0.1%	0.1%

Source: 2011 Census

Communal Establishments: There are 4 communal establishments in Codnor & Waingroves Ward with 74 Codnor and Waingroves residents residing in them.

Vacant Properties: At October 2013 there were 41 vacant properties which is 4.7% of the private sector dwellings.

Ward Building Rates: A total of 24 dwellings have been developed between 2009 and 2013. This is 1.95% of the total number of dwellings built within the Borough.

Figure 8: Five Year Housing Land Supply

FIVE YEAR HOUSING LAND SUPPLY WARD BUILDING RATES						
<i>Area</i>	2008-09	2009-10	2010-11	2011-12	2012-13	Total
<i>Codnor & Waingroves</i>	8	0	6	5	5	24
<i>Amber Valley</i>	334	213	254	206	219	1229

Source: Amber Valley house-building records

Housing Stock Condition: The Amber Valley Housing Condition Survey 2010 outlines the physical state of dwellings in Codnor and Waingroves. The condition of the housing in this area is generally slightly poorer than the Borough average. There are 3% more non-decent homes in Codnor and Waingroves than the Borough as a whole.

Figure 9: Amber Valley Housing Stock Condition Survey 2010

Area	% Of non-decent homes	% Of households lacking modern facilities	% Of households lacking thermal comfort	% Of households vulnerable in non-decent homes	% Of total dwellings in disrepair
Codnor & Waingroves	40%	1.2%	18%	9%	15%
Amber Valley	37%	1%	15%	12%	15%

Source: Amber Valley Housing Stock Survey 2010

Local Plan Part 1 – The Core Strategy:

Two strategic residential sites are proposed for allocation in the Codnor and Waingroves area in the Local Plan Part 1 – The Core Strategy:

- SG6: Coppice Farm has outline planning permission for 360 dwellings.
- SG2: Alfreton Road, Codnor is estimated to have the potential for around 600 dwellings and will require the implementation of the new A610 link road between Ripley and Woodlinkin.

In addition to the above allocations, three potential sites in Waingroves and four potential sites in Codnor have been identified in the Strategic Housing Land Availability Assessment (SHLAA) for Amber Valley.

Healthier Communities

Multiple Deprivations: The Index of Multiple Deprivation (IMD) published by the government in 2010 indicates that the Codnor and Waingroves population experiences varying levels of deprivation. The most deprived part of the area is mainly rural and is within the most (33%) deprived areas of the Borough. For health and disability two out of three Lower Super Output Areas (LSOAs) lie within the 50% least deprived in the country.

Life Expectancy: Local people in the Codnor & Waingroves area have a slightly above Borough and regional average life expectancy, with males having the highest average life expectancy in Amber Valley.

Figure 10: Life Expectancy

Life Expectancy at Birth: 2005-09	Males	Females
Codnor and Waingroves	83.8	82
Amber Valley	78.8	82.8
East Midlands	80.2	81.8

Source: Public Health England (www.empho.org.uk)

Figure 11: Physical Activity and Obesity

25% of adults and 18% of Year 6 schoolchildren are obese in Amber Valley and only 57% of adults undertake 150 minutes of physical activity per week. These figures reflect the national average.

%	Amber Valley	England Average	England Worst	England Best
Physically Active Adults¹	57.4	56	43.8	68.5
Obese Adults²	25.1	24.2	30.7	13.9
Obese Children³	17.5	19.2	28.5	10.3

Source: Public Health England – Health Profile 2013 Amber Valley

General Health: The percentage of people who consider their health to be very good is slightly less than the Borough average of 44%, while the percentage of people who consider their health to be fair or bad is slightly higher than the Amber Valley average. At 2011 Census there were 564 (11.6%) people in the Ward who considered their day to day activities were limited a lot by long-term health problems or disability, slightly higher than the Borough average of 9.4%.

Figure 12: General Health

Percentages	Codnor & Waingroves	Amber Valley	East Midlands	England
All People	100%	100%	100%	100%
Very Good Health	40.7	44.0	45.3	47.2
Good Health	35.8	35.0	35.1	34.2
Fair Health	16.3	15.0	14.0	13.1
Bad Health	5.7	4.8	4.3	4.2
Very Bad Health	1.4	1.3	1.2	1.2

Source: 2011 Census

¹ % adults achieving at least 150 mins physical activity per week, 2012

² % adults, modelled estimate using Health Survey for England 2006-2008

³ % school children in Year 6 (age 10-11), 2011/12

Children and Young People

Youth Activities and Provision:

Youth Volunteering – Borough wide.
 Mini Olympics – Borough wide.
 Out Reach Sports – Holiday times
 3 Parish Buses on a Tuesday

School Capacity and Educational Provision:

Figure 13: School Admissions Figure

Admissions numbers for 2013/14

Codnor Community Primary	40
Waingroves Primary	30

Attainment:

Figure 14: Literacy & Numeracy Skills - Key Stage 2, achieving level 4 or above in English & Maths

	2009	2010	2011	2012	2013
<i>Codnor Primary</i>	71%	85%	80%	91%	78%
<i>Waingroves Primary</i>	79%	71%	86%	77%	52%
<i>LA (Derbyshire)</i>	75%	76%	78%	83%	78%
<i>England</i>	72%	73%	74%	79%	75%

Source: Department for Education 2014

As can be seen from figure 14 students residing in Codnor achieve on par the average grades achieved by students across the Local Authority. However, students in Waingroves achieve significantly poorer results than the Derbyshire average.

The data in Figure 15 reflects the average grades attained by students attending Heanor Gate Science College and Mill Hill School which both fall into the Codnor and Waingroves catchment area. At 2013 53% of students attending Heanor Gate Community College attained five GCSE A*-C, including Maths and English, compared to 63% of pupils attending Mill Hill School. Mill Hill's results are better than the Local Authority and England averages, whereas Heanor Gate's results are poorer.

Figure 15: GCSE (Key Stage 4) Attainment

GCSE Attainment 2013	Heanor Gate Science College	Mill Hill School	LA (Derbyshire)	England
<i>Pupils Achieving 5 GCSE (or equivalent) A*-C including Maths & English</i>	53%	63%	59%	59.2%
<i>Pupils Achieving GCSE 5+ A*-G grades</i>	98%	97%	96.4%	94.3%

Source: Department for Education 2014

Economic Prosperity

Household Income:

Figure 16: Income Bands

2013

0-5k	5-10k	10-15k	15-20k	20-25k	25-30k	30-35k
2.8%	11.9%	14.5%	12.2%	10%	8.6%	7.5%

Sourced from Paycheck CACI 2013

2008

0-5k	5-10k	10-15k	15-20k	20-25k	25-30k	30-35k
3.1%	7.8%	12%	14.3%	13.7%	11.7%	9.4%

Sourced from Paycheck CACI 2008

Figure 17: Average Income

2013

MEAN	MODE
£30,439	10 – 15k

Sourced from Paycheck CACI 2013

2008

MEAN	MODE
£28,267	15 – 20k

Sourced from Paycheck CACI 2008

There are two calculations above identifying the average annual income for the residents of Codnor and Waingroves.

Mean Income- The mean is the most common measure of average.

Mode- The mode is the number, which occurs most often in a set of data. There can be more than one mode.

Average income has risen by 7% from 2008-2013, but is still 10.5% below the Borough average of £34,017. The modal income has fallen from 15-20K to 10-15K, which means that more households are earning less than they were in 2008.

Economic Activity: The 2011 census showed that economic activity in the area was 68.9%, similar to the Borough average of 69.9% and the Regional and National averages. The percentage of people long-term unemployed, however, is lower than the Borough, Regional and National averages.

Figure 18: Economic Activity

<i>Economic Activity</i>	<i>Codnor & Waingroves</i>	<i>Amber Valley</i>	<i>East Midlands</i>	<i>England</i>
<i>Economically Active (including unemployed and full-time students)</i>	68.9%	69.9	69.4	69.9
<i>Economically Inactive (including retired, Long term sick/disabled)</i>	31%	30.2	30.8	30.1
<i>Long Term Unemployed</i>	1.4%	1.6	1.6	1.7

Source: 2011 Census

Employment Areas: There are two designated employment areas that fall within the Codnor & Waingroves area. These are Codnor Gate Industrial Estate and Whiteley Road Industrial area off Peasehill Road, Ripley and they total 21 hectares.

Local Industries: The manufacturing industry is the major employer in this area, accounting for 20.5% of persons employed. The wholesale & retail industry is the second most important employer in the area accounting for 18.4% of persons employed. These are both the highest employers on average in the Borough and in the East Midlands. (Source: 2011 Census)

Unemployment: In December 2013 the average rate of unemployment in Codnor & Waingroves area was 1.9%, which is slightly above the Borough average. This has fallen since March 2012 when it was 3.2% compared to the Amber Valley average at that time of 3.6% (Derbyshire County Council December 2013).

Benefit Claimants: The total number of benefit claimants is slightly lower than the Borough average. The number of Job Seekers claimants is similar to the Borough average, yet lower than the national average.

Figure 19: Benefit Claimants

<i>(Percentages)</i>	<i>Codnor & Waingroves</i>	<i>Amber Valley</i>	<i>Great Britain</i>
<i>Total claimants</i>	11.6	12.1	13.6
<i>Job seekers</i>	2.2	2.1	3.2
<i>ESA and incapacity benefits</i>	5.5	5.7	6.1
<i>Lone parents</i>	1.1	1.1	1.3
<i>Carers</i>	1.1	1.5	1.3
<i>Others on income related benefits</i>	0.2	0.4	0.4
<i>Disabled</i>	1.3	1.3	1.2
<i>Bereaved</i>	0.2	0.2	0.2

Source – Nomis August 2013

Occupation: The largest occupation group is the skilled trades, followed by machine operatives and elementary occupations. This is quite different to the Borough average where the largest occupational group is professional.

Figure 20: Occupation

(Percentages)	Codnor & Waingroves	Amber Valley	England
1 Managers, Directors, Senior officials	9.0	10.8	10.9
2 Professional	9.6	14.8	17.5
3 Associate professional & technical	9.1	11.0	12.8
4 Administrative & secretarial	9.3	10.7	11.5
5 Skilled trades	17.2	13.8	11.4
6 Personal services	10.2	9.0	9.3
7 Sales and customer services	8.7	7.4	8.4
8 Process plant and machine operatives	13.5	11.0	7.2
9 Elementary occupations	13.3	11.6	11.1

(Source: 2011 Census)

Qualifications: In the Codnor & Waingroves area, a higher percentage of people have no qualifications compared to the Borough and national average. There is also a significantly lower percentage of people with Level 4 and above qualifications than for the Borough.

Figure 21: Qualifications

(Percentages)	Codnor & Waingroves	Amber Valley	England
Usual Residents Aged 16 and over (Persons)	4,106	100,841	42,989,620
No Qualifications	32.1	27.0	22.5
Level 1 Qualifications	14.6	13.9	13.3
Level 2 Qualifications	15.5	15.5	15.2
Apprenticeships	5.3	4.6	3.6
Level 3 Qualifications	12.9	12.0	12.4
Level 4 & above Qualifications	14.8	23.2	27.4
Other Qualification	4.9	3.9	5.7

Source: 2011 Census

Local Industries: The Manufacturing industry is the biggest employer in this area, accounting for 20% of persons employed. The Retail industry is the second most important employer in the area accounting for over 18% of persons employed, and both industries are also the highest employers in the Borough and the East Midlands. (Source: 2011 Census)

Transport

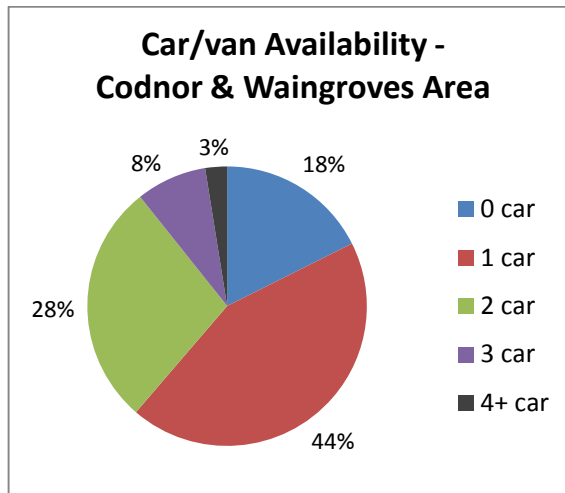
Transport Infrastructure: Codnor & Waingroves is served by one major road, the A610 to Nottingham in the east and to Ripley and the A6 in the west. The A6007 serves Ilkeston and also joins A38 road serving Derby. The rest of the area is served by minor roads.

Amber Valley Borough Local Plan Part 1 – Core Strategy Strategic Transport Infrastructure Priorities:

There is a long standing commitment by both the Borough and County Council to securing the completion of a new A610 link road between Ripley and Woodlinkin. The provision of this new link road will not only relieve traffic congestion on the current A610 route, but will improve the east-west link between the A6/A38 and the M1 through the Borough. A planning application for this scheme is currently being considered.

Cycle Routes: The infrastructure to support sustainable modes of transport such as cycling, walking and other non-motorised transport has not been extensively developed in Codnor. There is however a proposed multi-user route that will introduce such infrastructure and help improve connections with other places in the borough.

Car/van Availability: Car/Van availability in the area is average (82.4% own one car or more), although a little higher than the Amber Valley figure of 80.8%.



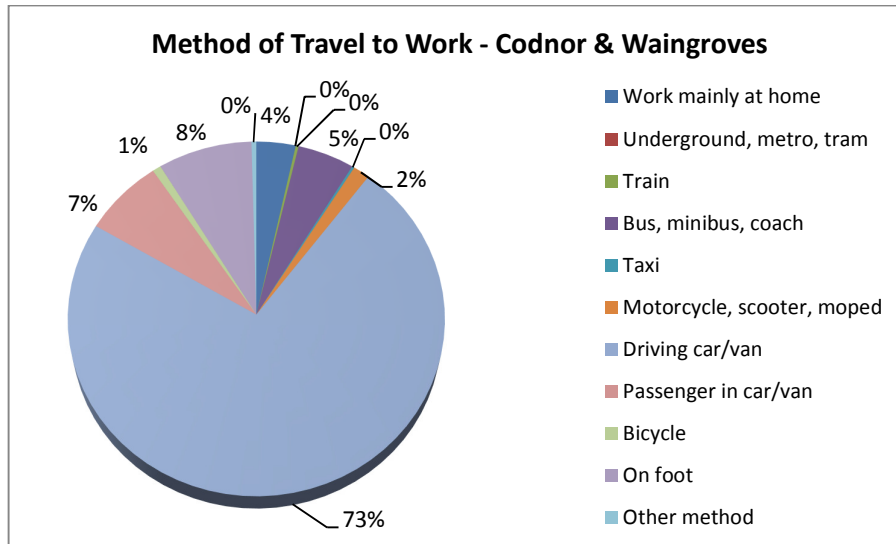
(Source: 2011 Census)

Method of Travel to Work: The majority of people travel to their place of employment by car or van followed by being more sustainable and travelling by foot to their place of employment. The methods of transport are very similar to the averages for Amber Valley, although there is a lower percentage travelling by train, probably due to the lack of an easily accessible railway station.

Figure 22: Method of Travel to Work

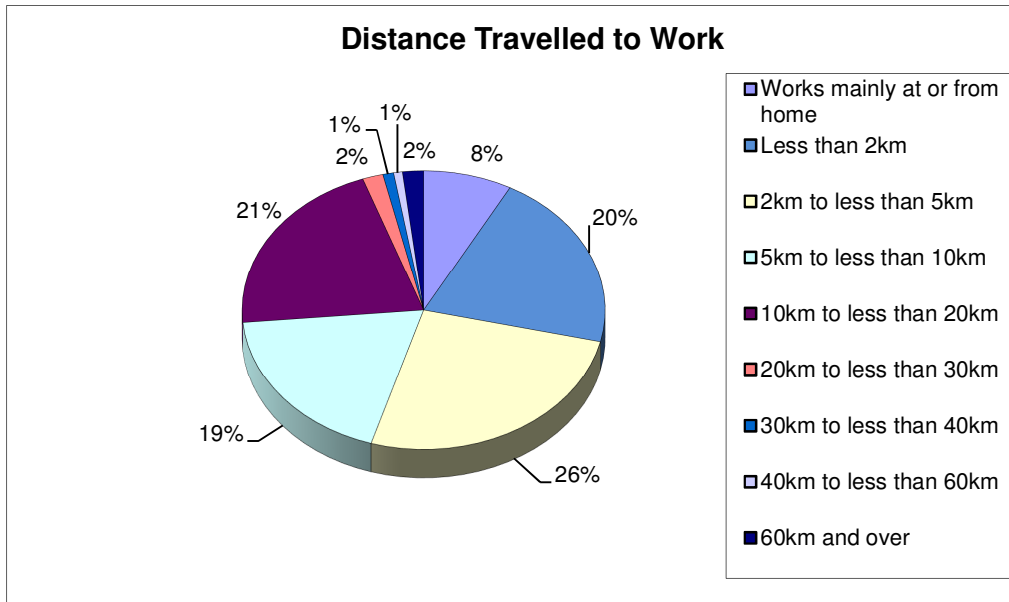
(Percentages)	<i>Codnor & Waingroves</i>	<i>Amber Valley</i>	<i>England</i>
Usual Residents Aged 16 – 74 in employment (Persons)	2,369	59,381	25,162,721
Work mainly at home	3.5	5.1	5.4
Underground, metro, tram	0.0	0.1	4.1
Train	0.3	1.2	5.3
Taxi	0.2	0.3	0.5
Motorcycle, scooter, moped	1.5	1.0	0.8
Driving car/van	73.0	71.0	57.0
Passenger in car/van	7.1	5.6	5.0
Bicycle	0.8	1.4	3.0
On foot	8.3	9.7	10.7
Other method	0.4	0.4	0.6

Source: 2011 Census



Source: 2011 Census

Distance travelled to Work: According to the 2001 census 26% of people that reside in Codnor and Waingroves travel between 2km and 5km followed by between 10km and 20km and then less than 2km.



Source: Census 2001

Community Transport: There are community transport links to the rest of the Borough.

Figure 23: Community Transport Timetable

Service	Route	Frequency
DAB10	Smalley-Waingroves - Codnor - Heanor (N)- Loscoe	Weekly
DERBY H	Smalley-Shipleigh-Langley Mill- Codnor - Loscoe-Waingroves – Aldercar - Heanor	Weekly

Derbyshire County Council 2013

Public Transport: Codnor and Waingroves are poorly served by public transport however there is a bus to Nottingham every 30 minutes and an hourly bus to Derby.

Figure 24: Bus Timetable for Codnor and Waingroves

Service	Route	Frequency
1	Ripley • Heanor • Eastwood • Nottingham	Every 30 Minutes
1a	Ripley • Heanor • Langley • Aldercar	Hourly
148	Alfreton • Pentrich • Ripley • Codnor	Hourly (part Hail & Ride')
H1	Derby • Heanor • Alfreton	Hourly

Derbyshire County Council 2013

Rail Service: Codnor is in close proximity to Langley Mill where there are hourly services to both Nottingham and Leeds.

Accessibility: A collection of six essential service destination types have been identified to reflect those discussed in the Social Exclusion Unit Report (2003) -

Making the Connections. The DfT Accessibility Indicators Report (2007) sets out the core indicators thresholds for each destination type.

Figure 25: Identified In The Table Below Are The Journey Times To Key Services.

Key Destination	Journey Time Thresholds (mins)*	
	Lower	Upper
GP Surgery	15	30
Pharmacy	15	30
Post Office	15	30
Primary School	15	30
Secondary School	20	40
Supermarket/ Convenience Store	15	30

DfT Accessibility Indicators Report 2007- Core Indicator Threshold

Figure 26: Travel Times To Key Destinations From Codnor And Waingroves

	Doctors Surgery	Pharmacy	Post Office	Primary School	Secondary School	Supermarket
Travel Time Access by Cycle mins (16kph)	3.3	3	3	2	4.6	3
Travel Time by Foot mins (4.8kph)	10.6	10.3	10.3	6.3	16.3	9.3
Travel Time Access by Public Transport mins (weekday 0700-0900)	10.3	10.2	10.13	6.52	13.9	9.5

Average travel times Codnor and Waingroves (Measurement of Existing Accessibility- Amber Valley SHLAA Sites) August 2009

As can be seen from the table above residents have good accessibility to services. All services are within the lower travel time threshold set out by the DfT 2007.

Environment

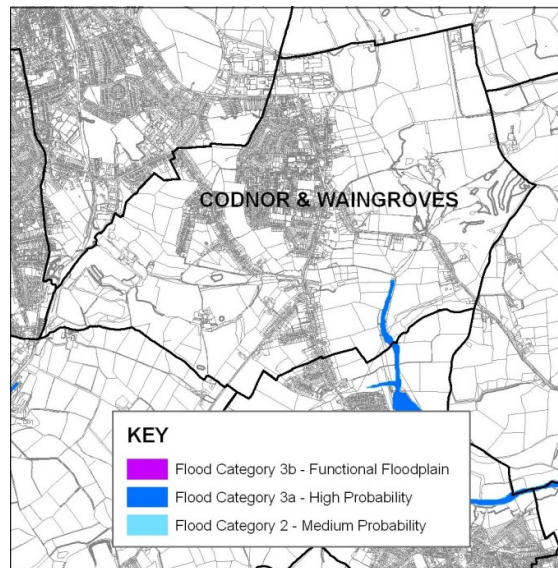
Conservation Areas: There is one conservation area in Codnor and Waingroves (Waingroves Hall 1.49 hectares)

Landscape Character Areas: The Codnor & Waingroves area falls within the Nottinghamshire, Derbyshire and Yorkshire Coalfield Landscape Character Area and consists of one character types namely, Coalfield Village Farmlands. A large proportion of the area is urban.

Green Belt / Designated Sites: Approximately 70% of the area lies in the Green Belt and there is 1 wildlife site. There are no SSSIs or Local Nature Reserves in the area.

Water and Flood Risk: There are no major rivers in Condor and Waingroves, there are however a number of ordinary watercourses that are tributaries of Bailey and Bottle Brooks. According to the Amber Valley Level 1 SFRA, most of Codnor and

Waingroves lie within the flood zone 1 (low risk zone). However, a very small area around some of its ordinary water courses lie within the flood zone 3a (High risk zone). - See map



Culture Arts and Tourism

The settlements of Codnor and Waingroves date far back to medieval times and are listed in the doomsday book of 1086. Important cultural assets include Codnor Castle built in the 13th century and The Codnor Park Monument erected in 1854. These and other sites capture the cultural heritage of the local area.

Leisure and Recreation

Leisure Centres: 0

Libraries: There is no local library in Codnor but the area is served by 2 mobile library visits per day, twice a month.

Museum: 0

Sport and Recreation: There are a few sports and recreational facilities and spaces in Codnor and Waingroves. These include a recreation ground, a playing field and playground and a sports ground which includes a football pitch and bowling green, all of which offer local people the opportunity for exercise and relaxation.

Recreation: Places for leisure and recreation include a Public Open Space on Heanor Road, Codnor; Colin Road, Waingroves; Waingroves Common and Cross Hill Play area. There are other similar play areas for children in the locality.

Figure 27: Recreation Sites Codnor and Waingroves

<i>Parks & Gardens</i>	<i>Natural green spaces</i>	<i>Green Corridors</i>	<i>Outdoor Sports Facilities</i>	<i>Amenity Green space</i>	<i>Children/ Young People</i>	<i>Cemeteries, closed churchyards</i>
0	0	0	0	1	4	2

Golf Course: 1

Ormands Field Golf & Country Club, Golf House, Nottingham Road.

Community Centres: 3

Peveral House Adult Community Education service, Mill Lane Codnor; Waingroves Community Centre, Church street, Waingroves.

Summary

- **Housing:** The average house price for the ward is 17% lower than the average house price for the Borough. There have been a total of 24 dwellings built since 2009.
- **Retail:** There is a moderate provision of retail offer in Codnor. There is a small supermarket and local people have easy access to larger supermarkets in Ripley. There are also a moderate number of local shops that provide convenience and comparison shopping opportunities for the area.
- **Facilities:** The residents of Codnor and Waingroves have good access to the facilities within Ripley and the surrounding area; these are within the lower travel time thresholds set out by the DfT, 2007.
- **Education:** At 2013, 63% of pupils attending Mill Hill School attained five GCSE A*-C (including Maths and English) compared to 53% of students attending Heanor Gate Science College
- **Life Expectancy:** The life expectancy of females in Codnor and Waingroves is slightly less than the average for the Borough, whereas the average for males is the highest rate in the Borough.
- **General Health:** The general health of the population living within this ward is slightly poorer than the general health the Borough.
- **School Capacity:** There are two primary schools with a combined admissions number of 70 for 2013/14.
- **Population:** At 2011 the population was approximately 4847 with a density of 9.1 people per hectare which reflects the urban nature of Codnor and Waingroves.
- **Deprivation:** The Index of Multiple Deprivation (IMD) published by the government in 2010 indicates that the Codnor and Waingroves area experiences varying levels of deprivation. The most deprived part of the area is mainly rural and is within the 33% most deprived parts of the Borough.
- **Transport:** The residents of Codnor and Waingroves have limited access to public transport, however there is an hourly train service to Nottingham and Leeds from Langley Mill Station, which is in within close proximity to Codnor and Waingroves. In terms of road infrastructure there is 1 major road, the A610 to Nottingham in the east and to Ripley and the A6 in the west.
- **Crime:** The incidence of crime in Codnor & Waingroves is below the Borough average, except for criminal damage and arson. The area is however experiencing fairly high levels of anti-social behaviour, although these are lower than the Amber Valley average.
- **Employment:** The 2011 Census showed that economic activity in the area was similar to the Borough average with 68.9% of people economically active. In 2013 average incomes had risen to £30,439 but were still 10.5% below the Borough average. There are two designated employment sites in the Local Plan with the manufacturing industry as the major employer in the area.
- **Built Environment:** The Codnor & Waingroves area falls within the Nottinghamshire, Derbyshire and Yorkshire Coalfield Landscape Character Area and consists of one character type namely, Coalfield Village Farmlands. A large proportion of the area is urban. Approximately 70% of the area lies in the Amber Valley Borough Green Belt and there is 1 wildlife site. There are no SSSIs or Local Nature Reserves in the area.