



## Area Profile: Duffield

### Spatial Outline

The settlement of Duffield is located to the south of Amber Valley Borough at its boundary with Erewash, approximately 5 miles north of Derby and 15 miles west of Nottingham. The area is linked to several transport corridors including the A6, the Derwent Valley Railway line and the River Derwent runs north-south through its boundaries. The village centre of Duffield is situated in the Derwent Valley Mills World Heritage Site Buffer Zone. The village benefits from being surrounded by rolling countryside and the River Ecclesbourne and River Derwent flow through it, with land either side of the River Derwent within the Derwent Valley Mills World Heritage Site. There are a number of good access roads and public transport links, with train and bus links to the north and south. The area has close connections to settlements in Holbrook, Quarndon and cross boundary links within Derby City and Erewash.

#### Key Characteristics

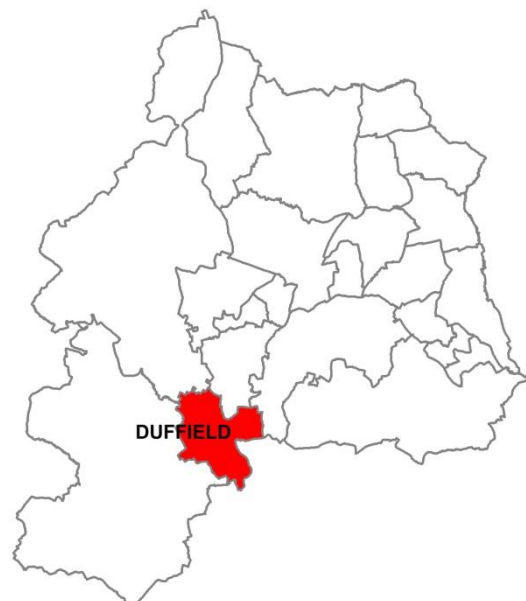
**Population:** 5046

**Number of Households:** 2028

**Population Density:** 6.4 people/hectare

**Approximate Area:** 786 Hectares

**Source:**  
Census 2011



## Improving Places and Meeting Community Needs

**Land Area:** Duffield covers 786 Hectares.

**Population Density:** At the 2011 Census population estimate the population density was approximately 6.4 people per hectare. This is slightly higher than the average density for the Borough of 4.6 people per hectare.

**Age:** 37% of Duffield's population is aged between 30 - 59 years, but it is a slightly lower percentage than the Borough average for that age group. The percentage of children is higher than the average for the Borough, but the percentage of young adults is significantly lower.

**Figure 1: Age of the Population**

<i>Age</i>	<i>Duffield</i>		<i>Amber Valley</i>	
<i>0 – 17 years</i>	1272	25.3%	24630	20.1%
<i>18 – 29 years</i>	387	7.7 %	15340	12.6 %
<i>30 – 59 years</i>	1861	36.9%	50381	41.2 %
<i>60 – 74 years</i>	894	17.7 %	21675	17.7%
<i>75 + years</i>	632	12.5 %	10283	8.4%

Source Census 2011

**Religion:** The majority of population (66.6%) state they are of Christian belief, with nearly a quarter of the population stating they had no religion. (Source: Census, 2011).

**Nationality:** The majority of people in Duffield were born in England (91%) followed by elsewhere in the UK (3.5%). (Census, 2011).

**Ethnicity:** The people living in Duffield are predominantly White (96.1%) with a very small but diverse proportion of ethnic minorities residing in the area (Census, 2011).

**Household Composition:** The predominant household type in Duffield is married / civil partnership families with dependent children, accounting for nearly a quarter of the households, compared to the 15.4% average for Amber Valley. Nearly a third of households comprise people aged 65 and over, again significantly higher than the Borough, Regional and National averages of less than 23%. (Census, 2011).

**Figure 2: Household Type**

<b>Household Type (Percentage)</b>	<b>Duffield</b>	<b>Amber Valley</b>
<b>Household (total)</b>	<b>2,028</b>	<b>52,596</b>
1 person age 65+	17.9	12.8
1 person under 65	9.5	15.1
Family, all 65+	14.2	9.6
Family, married/civil no children	12.4	15.4
Family, married/civil dependent children	24.5	15.4
Family, married/civil all children non-dep.	5	6.3
Family, co-habiting no children	2.8	6.4
Family, co-habiting dependent children	2.1	4.7
Family, co-habiting all children non-dep.	0.3	0.6
Family, lone parent dependent children	5.3	5.8
Family, lone parent all children non-dep.	2	3.4
Other households with dep. children	1.8	1.7
Other - all students	0	0
Other - all age 65+	0.2	0.3
Other	2.1	2.8

Source: 2011 Census

### **Service Provision**

**Shopping Services:** There is a moderate retail offer in Duffield, although no major shopping centre. There are a sizeable number of local shops that provide convenience and comparison-shopping opportunities for the area but there are no large supermarkets or retail outlets.

#### **Major Food Stores: 0**

Nearest, Morrisons, Chapel Street, Belper, Derbyshire.

#### **Post Office: 1**

3 Eyes Court, Town Street.

#### **GP Surgery: 1**

Appletree Medical practice, 47a Town Street

#### **Community Clinic: 0**

#### **Opticians: 1**

Optimal Health, 31 Town Street

#### **Pharmacy: 1**

Lloyds, 30 Town Street

#### **Dentists: 1**

The Dental Practice, 59 King Street

#### **Hospital: 0**

Nearest is Babington, Derby Road, Belper

**A&E Hospital:** Royal Derby Hospital (out of borough)

**Primary School:** 2

Duffield Meadows Primary School, William Gilbert CE Endowed Primary School

**Secondary School:** 1

The Ecclesbourne School

**University:** Derby University, Kedleston Road (out of Borough)

**Adult Education:** 0

Nearest Belper Adult Community Education Centre, Holbrook Road.

Belper Community Hall

Belper School

**Places of Worship:** 5

Emmanuel Community Church, 32 Chapel Street;

St, Alkmunds Duffield Church, Church Drive;

Duffield Baptist Church, Makeney Road;

Trinity Methodist Church, King Street;

St Margaret Catholic Church, Old Hall Farm Road.

**Community Centres:** 1

The Weston Centre, Weston Centre, Tamworth Street.

**Child Care:**

12 Child Minders; 6 Play Groups

**Sure Start:** 1

Duffield Children's Centre.

### **Safer Communities**

**Crime Rates:** The crime rate in Duffield is one of the lowest in the Borough and the ward is ranked 20<sup>th</sup> (1<sup>st</sup>=worst). All types of crime are at significantly lower rates than for the Borough overall.

**Figure 3: Anti-Social Behaviour and Crime Rates**

<i>(Rate / 1000 people)</i>	<i>Duffield</i>	<i>Amber Valley</i>	<i>Rank (1=worst)</i>
<b>Anti-Social Behaviour</b>	19.2	41.3	18th
<b>Criminal damage / arson</b>	3.6	8.3	19th
<b>Theft / burglary</b>	11.7	24.1	22nd
<b>Violence with injury</b>	1.4	3.8	16th
<b>Violence without injury</b>	1.4	2.9	17th
<b>Public disorder</b>	0	0.6	=23rd
<b>Drug offences</b>	0.4	2.5	21st
<b>Shoplifting</b>	1.8	4.2	11th

Source: Safer Derbyshire Research & Information Team, Derbyshire County Council Jan – Dec 2013

## Housing

### House Prices and Affordability:

**Figure 4: Housing Affordability**

<b>Borrowing ratio 95% house price to average income</b>	
Duffield	7
Amber Valley	4.2

Source: CACI Paycheck 2013 and Zoopla 2014

**Figure 5: Average House Prices**

<i>Area</i>	<i>Detached</i>	<i>Semi-Detached</i>	<i>Terraced</i>	<i>Flat / Maisonette</i>	<i>Average</i>
<b>Duffield</b>	£419,579	£267,250	£175,856	£175,320	£327,323
<b>Amber Valley</b>	£223,995	£124,930	£96,841	£122,389	£151,011

Source: Amber Valley figures – <http://news.bbc.co.uk/> based on April-June 2013 sales

Source: for Wards <http://www.zoopla.co.uk> based on Feb 2014 current values

House prices in Duffield are some of the highest in the Borough. The average house price is 54% higher than that for the Borough, but affordability is worse because average household incomes are only 24% higher.

### Homelessness:

In the financial year 2011/12 there was one priority need applicant from the Duffield area, and a further 4 applicants approaching the service for advice.

**Affordable Housing Rates:** No affordable dwellings were delivered in Duffield between 2008 and 2013.

**Housing Stock Condition:** The Amber Valley stock condition survey (2010) outlines the physical state of dwellings in Duffield. As of 2010 21% of houses were lacking thermal comfort, with 6.2% of dwellings in disrepair.

**Figure 6: Amber Valley Housing Condition Survey Results 2010**

<b>% Of Non-decent homes</b>	<b>% Of households lacking modern facilities</b>	<b>% Of households lacking thermal comfort</b>	<b>% Of households vulnerable households in non-decent homes</b>	<b>% Of total dwellings in disrepair</b>
26%	2.5%	21%	3.1%	6.2%

**Type:** The majority (51.3%) of dwellings are detached followed by semi-detached (24.9%), flats (12.8%) and terraced (10.9%). (Census 2011)

**Tenure:** The majority of people living in Duffield own their own property (81.4%), although this has fallen from 84.4% in 2001. The proportion of those who socially rent (6.5%) is significantly lower than that for the Borough overall (12.3%)

**Figure 7: Tenure**

<b>Type of Tenure</b>	<b>Duffield</b>	<b>Amber Valley</b>
<b>All</b>	100%	100%
<b>Owned (outright)</b>	47.8%	38.2%
<b>Owned (mortgage/loan)</b>	33.6%	35.9%
<b>Shared ownership</b>	0.9%	0.4%
<b>Social rented (LA)</b>	2.6%	5.1%
<b>Social rented (other)</b>	3.9%	7.2%
<b>Private rent</b>	9.8%	11.8%
<b>Living rent free</b>	1.3%	1.4%

Source: 2011 Census

**Communal Establishments:** 2, with a total of 60 residents.

**Ward Building Rates:** A total of 42 dwellings have been built between 2008 and 2011 which is 3.4% of the total number of dwellings built within the Borough.

**Figure 8: Ward Building Rates**

<b>FIVE YEAR HOUSING LAND SUPPLY WARD BUILDING RATES</b>						
<b>Area</b>	<b>2008 – 2009</b>	<b>2009 – 2010</b>	<b>2010 – 2011</b>	<b>2011 – 2012</b>	<b>2012 – 2013</b>	<b>TOTAL</b>
<b>Duffield</b>	37	3	-2	2	2	42
<b>Amber Valley</b>	334	214	256	206	219	1229

Source: Amber Valley Borough Council house building records

**Vacant Properties:** At October 2013 there were 44 vacant private sector dwellings.

### Local Plan Part 1 – The Core Strategy:

No dwellings are proposed for allocation in the Duffield area in Local Plan Part 1 – The Core Strategy.

Three potential sites have been identified in the Strategic Housing Land Availability Assessment (SHLAA) for Amber Valley.

### Health:

**General Health:** The general health of people living in Duffield is better than that for the Borough with a significantly lower proportion of people living in bad or very bad health (3.8%) compared to 6.1% for Amber Valley.

**Figure 9: General Health**

Percentages	<i>Duffield</i>	<i>Amber Valley</i>	<i>East Midlands</i>	<i>England</i>
<b>All People</b>	100%	100%	100%	100%
<b>Very Good Health</b>	53.5	44.0	45.3	47.2
<b>Good Health</b>	31.3	35.0	35.1	34.2
<b>Fair Health</b>	11.5	15.0	14.0	13.1
<b>Bad Health</b>	2.8	4.8	4.3	4.2
<b>Very Bad Health</b>	1.0	1.3	1.2	1.2

Source: 2011 Census

**Multiple Deprivation:** The Indices of Multiple Deprivation (IMD) published by the Government in 2010 indicate that Duffield is ranked within the least deprived 10% in the Borough. Two of the Lower Super Output Areas (LSOAs) within Duffield are within the 5% least deprived in the whole country. For Health and Disability Duffield is ranked in the 50% least deprived LSOAs in the country.

**Life Expectancy:** Local people in the Duffield area have an above Borough and above national average life expectancy. The average man is expected to have the life expectancy of 79.8 and the average woman 83.1.

**Figure 10: Life Expectancy**

<i>Life Expectancy at Birth: 2005-09</i>	<i>Males</i>	<i>Females</i>
<b>Duffield</b>	79.8	83.1
<b>Amber Valley</b>	78.8	82.8
<b>East Midlands</b>	80.2	81.8

Source: Public Health England ([www.empho.org.uk](http://www.empho.org.uk))

**Figure 11: Physical Activity and Obesity**

25% of adults and 18% of Year 6 schoolchildren are obese in Amber Valley and only 57% of adults undertake 150 minutes of physical activity per week. These figures reflect the national average.

%	Amber Valley	England Average	England Worst	England Best
<b>Physically Active Adults<sup>1</sup></b>	57.4	56	43.8	68.5
<b>Obese Adults<sup>2</sup></b>	25.1	24.2	30.7	13.9
<b>Obese Children<sup>3</sup></b>	17.5	19.2	28.5	10.3

Source: Public Health England – Health Profile 2013 Amber Valley

## Children and Young People

### School Capacity and Educational Provision

#### Figure 12: School Admissions Figures

##### Admissions numbers for 2013/14

Duffield Meadows Primary	45
William Gilbert Primary	35
Ecclesbourne School	210

(source: Derbyshire County Council admissions book 2013/14)

#### Attainment:

#### Figure 13: Literacy and Numeracy Skills - Key Stage 2 Achieving Level 4 Or Above in English and Maths

	2012	2013
<i>Duffield Meadows Primary</i>	95%	94%
<i>William Gilbert Primary</i>	97%	86%
<i>LA (Derbyshire)</i>	83%	78%
<i>England</i>	79%	75%

Source: Department for Education 2014

A higher proportion of students attending primary schools in Duffield attain Level 4 or above in Maths and English at KS2 than in both the Local Authority and England.

#### Figure 14: GCSE Attainment Figures

As can be seen from the table below, 87% of students at Ecclesbourne School, Duffield achieved 5+ GCSE A\*-C including Maths and English. This is significantly higher than the Local Authority (Derbyshire) and national averages.

1 % adults achieving at least 150 mins physical activity per week, 2012

2 % adults, modelled estimate using Health Survey for England 2006-2008

3 % school children in Year 6 (age 10-11), 2011/12



GCSE Attainment 2013	Ecclesbourne School	LA (Derbyshire)	England
<i>Pupils Achieving 5+ GCSE (or equivalent) A*-C including Maths &amp; English</i>	87%	59%	59.2%
<i>Pupils Achieving GCSE 5+ A*-G grades</i>	100%	96.4%	94.3%

Source: Department for Education 2014

## Economy Prosperity

### Household Income:

**Figure 15: Average Household Income**

**2013**

MEAN	MODE
£44,562	10-15K

Source: Paycheck CACI 2013

**2013**

0-5k	5-10k	10-15k	15-20k	20-25k	25-30k	30-35K	35-40K
1.7%	7.2%	10%	9.2%	8%	7.4%	7%	6.2%

Sourced from Paycheck CACI 2013

**2008**

MEAN	MODE
£40,558	20-25K

Source: Paycheck CACI 2008

**2008**

0-5k	5-10k	10-15k	15-20k	20-25k	25-30K	30-35K	35-40K
1.4%	3.9%	6.9%	9%	9.9%	9.9%	9.3%	8.3%

There are two calculations above identifying the average annual income for the residents of Duffield.

Mean Income- The mean is the most common measure of average.

Mode- The mode is the number, which occurs most often in a set of data. There can be more than one mode.

Household incomes in Duffield are on average 23.7% higher than those for the Borough overall. The average household income rose in Duffield by 9% between 2008 and 2013. However, the modal income fell which means that more people are earning less.

**Economic Activity:** The 2011 census shows that economic activity in the area was 66.3%, lower than the Borough average of 69.9% and regional average of 69.4%.

**Figure 16: Economic Activity**

<b>Economic Activity</b>	<b>Duffield</b>	<b>Amber Valley</b>	<b>East Midlands</b>	<b>England</b>
<b>Economically Active</b> (including unemployed and full-time students)	66.3%	69.9	69.4	69.9
<b>Economically Inactive</b> (including retired, Long term sick/disabled)	33.7%	30.2	30.8	30.1
<b>Long Term Unemployed</b>	0.7%	1.6	1.6	1.7

Source: 2011 Census

### **Occupation:**

The largest occupational group in Duffield is Professional (32.8%), followed by Managers, Directors and Senior Officials (18.5%) and then Associate Professional & Technical (13.8%). These proportions are significantly larger than the Borough averages for the same groups.

**Figure 17: Occupation**

<b>(Percentages)</b>	<b>Duffield</b>	<b>Amber Valley</b>	<b>England</b>
<b>1 Managers, Directors, Senior officials</b>	18.5	10.8	10.9
<b>2 Professional</b>	32.8	14.8	17.5
<b>3 Associate professional &amp; technical</b>	13.8	11.0	12.8
<b>4 Administrative &amp; secretarial</b>	9.5	10.7	11.5
<b>5 Skilled trades</b>	6.5	13.8	11.4
<b>6 Personal services</b>	6.1	9.0	9.3
<b>7 Sales and customer services</b>	4	7.4	8.4
<b>8 Process plant and machine operatives</b>	2.8	11.0	7.2
<b>9 Elementary occupations</b>	6.1	11.6	11.1

Source: 2011 Census

### **Unemployment:**

**Unemployment:** In December 2013, the rate of unemployment in Duffield was 0.8% which was lower than the rate for Amber Valley of 1.8%. (Source: Derbyshire County Council 2014).

### **Benefits:**

At August 2013 the proportion of the population claiming benefits in Duffield was less than half that for the Borough. Of the those on benefits around half were claiming ESA and incapacity benefits.

**Figure 18: Benefit Claimants**

(Percentages)	<i>Duffield</i>	<i>Amber Valley</i>	<i>Great Britain</i>
<i>Total claimants</i>	5.6	12.1	13.6
<i>Job seekers</i>	0.9	2.1	3.2
<i>ESA and incapacity benefits</i>	2.5	5.7	6.1
<i>Lone parents</i>	0.5	1.1	1.3
<i>Carers</i>	0.7	1.5	1.3
<i>Others on income related benefits</i>	0	0.4	0.4
<i>Disabled</i>	0.7	1.3	1.2
<i>Bereaved</i>	0.2	0.2	0.2

Source – Nomis August 2013

**Qualifications:** The proportion of residents in Duffield who hold Level 4 & above Qualifications (49.3%) is over twice that for the Borough (23.2%). In addition the proportion who hold no qualifications is half that for the Borough overall.

**Figure 19: Qualifications**

(Percentages)	<i>Duffield</i>	<i>Amber Valley</i>	<i>England</i>
<i>Usual Residents Aged 16 and over (Persons)</i>	3,959	100,841	42,989,620
<i>No Qualifications</i>	13.5	27.0	22.5
<i>Level 1 Qualifications</i>	8.3	13.9	13.3
<i>Level 2 Qualifications</i>	13.7	15.5	15.2
<i>Apprenticeships</i>	2.6	4.6	3.6
<i>Level 3 Qualifications</i>	9.6	12.0	12.4
<i>Level 4 &amp; above Qualifications</i>	49.3	23.2	27.4
<i>Other Qualification</i>	2.9	3.9	5.7

Source: 2011 Census

**Employment Sites:** There are no designated employment areas or proposed employment sites in Duffield.

**Local Industries:** Human Health and Social Work is the most important industry, accounting for 15.5% of people employed. This is followed by Education which accounts for 14.2% and Manufacturing which accounts 12.1% of the workforce (Census 2011).

## Transport

**Transport Infrastructure:** Duffield is served by the A6, connecting it to Derby to the south and Matlock, Buxton and Manchester in the north. The remainder of the roads are minor roads linking it to local villages.

**Cycle Route:** The infrastructure to support sustainable modes of transport such as cycling, walking and other non-motorised transport has not been extensively developed in Duffield. There is however a multi-user route to the east of the village which forms part of the Derbyshire Greenway and a 9 mile heritage railway route

along the line of the Ecclesbourne Valley Railway which re-opened in April 2011.

**Car Availability:** Car/van ownership in the area is high. 86.4% of households own one car or more which is higher than the Borough average of 80.8% (Census 2011).

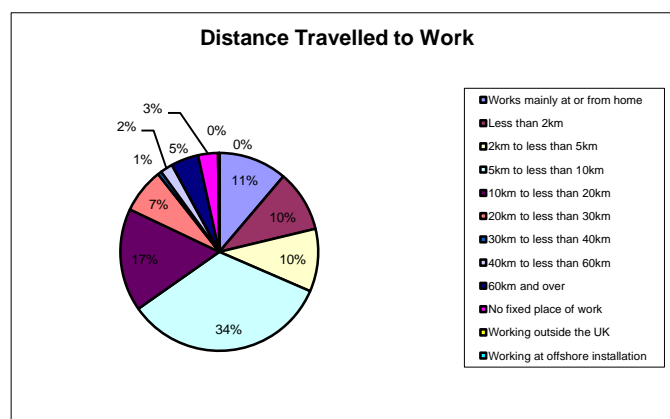
**Method of Travel to Work:** The majority of people (70.8%) travel by car or van to work, with 9.2% of people working from home. The proportion of the working population who use the train to get to work is three times that for the Borough, reflecting the fact that Duffield is on the Midland Mainline to Derby and Sheffield.

**Figure 20: Method of Travel to Work**

(Percentages)	Duffield	Amber Valley	England
<b>Usual Residents Aged 16 – 74 in employment (Persons)</b>	2,122	59,381	25,162,721
<b>Work mainly at home</b>	9.2	5.1	5.4
<b>Underground, metro, tram</b>	0.1	0.1	4.1
<b>Train</b>	3.6	1.2	5.3
<b>Bus, minibus, coach</b>	3	4.1	7.5
<b>Taxi</b>	0	0.3	0.5
<b>Motorcycle, scooter, moped</b>	0.9	1.0	0.8
<b>Driving car/van</b>	70.8	71.0	57.0
<b>Passenger in car/van</b>	3.1	5.6	5.0
<b>Bicycle</b>	1.8	1.4	3.0
<b>On foot</b>	7	9.7	10.7
<b>Other method</b>	0.4	0.4	0.6

Source: 2011 Census

**Distance Travelled to Work:** According to the 2001 Census, 34% of people travel 5km or less to work. This is likely due to its close proximity to Derby City.



**Rail Service:** There are hourly trains to Derby, Nottingham and Matlock. The travel time to Derby is 8 minutes.

**Local Bus Service:** Public transport services within the Duffield area are relatively frequent with 5 services to Derby and 1 hourly service to Nottingham and Manchester.

**Figure 21: Bus Timetable for Duffield**

<b>Service</b>	<b>Route</b>	<b>Frequency</b>
<b>6.1</b>	Derby, Belper, Wirksworth, Matlock, Bakewell	Every 20 minutes
<b>6.2</b>	Derby, Belper, Heage, Ripley	Every 10 minutes
<b>6.3</b>	Derby, Belper, Heage, Ripley	Every 10 minutes
<b>6.4</b>	Derby, Belper	Every 20 minutes
<b>17</b>	Derby, Darley Abbey, Duffield	Once every two hours
<b>TP</b>	Nottm, Derby, Belper, Matlock, Buxton, Manchester	Once hourly

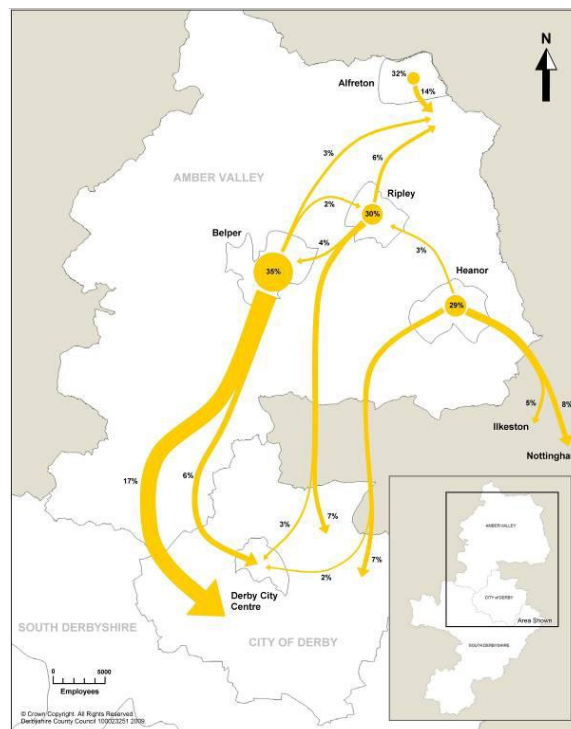
Source: Derbyshire County Council 2014

**Community Transport:**

Alfreton is a Primary Service Area for community transport. Amber Valley Community Transport is now working with Chesterfield Community Transport under the name CT4TC, Community Transport for Town and County. They provide essential transport for people with disabilities, elderly people and community groups. There are 18 buses plus a single wheelchair vehicle. A Community Car Scheme is also operated where volunteers use their own cars to provide transport. A mileage charge is applicable on all journeys to cover running costs.

Derbyshire County Council’s Dial a Bus service can be pre-booked and charges fares in line with public transport service. (Derbyshire County Council 2014)

**Location of Work:** A large number of people commute to nearby Derby City for employment.



**Accessibility:** A collection of six essential service destination types have been identified to reflect those discussed in the Social Exclusion Unit Report (2003)- Making the Connections. The DfT Accessibility Indicators Report (2007) sets out the core indicators thresholds for each destination type.

Identified in the table below are the journey times to key services.

**Figure 22: DfT Accessibility Indicators (2007)**

Key Destination	Journey Time Thresholds (mins)*	
	Lower	Upper
GP Surgery	15	30
Pharmacy	15	30
Post Office	15	30
Primary School	15	30
Secondary School	20	40
Supermarket/ Convenience Store	15	30

\*DfT Accessibility Indicators Report 2007- Core Indicator Threshold

**Figure 23: Travel times to Key Destinations**

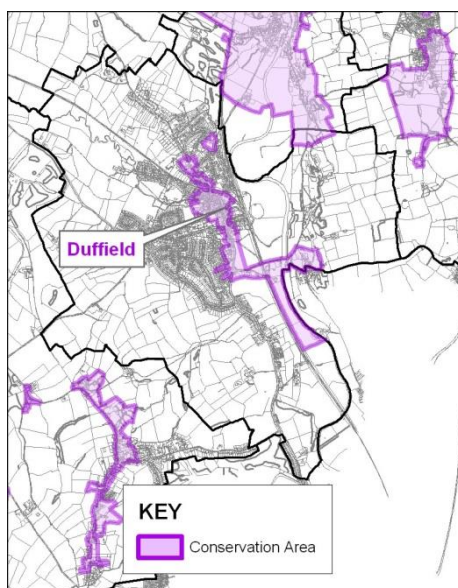
	Doctors Surgery	Pharmacy	Post Office	Primary School	Secondary School	Supermarket
Travel Time Access by Cycle mins (16kph)	2	3.3	3.6	3	3.3	4
Travel Time by Foot mins (4.8kph)	7	10.3	12.6	9.6	11.6	13
Travel Time Access by Public Transport mins (weekday 0700-0900)	7	9.5	11.8	7.9	10.8	12.2

Average travel times Duffield (Measurement of Existing Accessibility – Amber Valley SHLAA Sites) August 2009

Although the home to work trip is only 18.4% and 17.0% of the total daily journeys made in Derby and Derbyshire, respectively, compared to approximately 60% of all trips that are for leisure, shopping, visiting friends, social/leisure and holiday purposes, the home to work trip is non-discretionary and an important trip at the household, community and broader economic level. The efficiency by which this trip is made influences the household standard of living and, on an aggregate level, the efficiency of the broader economy. This trip is also a major contributor to congestion and domestic greenhouse gas during the weekday peak period.

## Environment

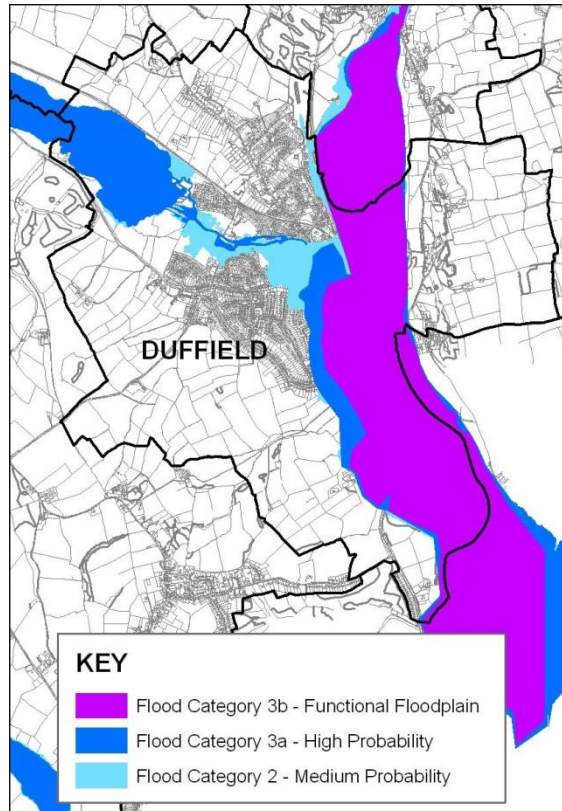
**Conservation Areas:** There are two conservation areas in Duffield (40.15 hectares) Duffield and Duffield Bank.



**Landscape Character Areas:** The Duffield area falls within the Derbyshire Peak Fringe and lower Derwent Landscape Character area and consists of 3 out of the 5 character types namely, Riverside Meadows, Wooded Slopes and Valleys and Wooded farmlands.

**Green Belt/ Designated Sites:** Approximately 80% of the area lies in the Green Belt and although there are no SSSI's or Natura 2000 sites, there are several biodiversity assets including the Duffield Millennium Meadow (Local Nature Reserve) and 6 wildlife sites all of which are of significant local importance.

**Water and Flood Risk:** There are two major rivers that run through the area, these are the River Derwent and the River Ecclesbourne. According to the Amber Valley Level 1 SFRA, most of Duffield area falls within the flood zone 1 and 2 (low and medium risk zone). However, the eastern parts of Duffield lie within flood zone 3a and 3b (High risk zone), which extends up to 300m on either side of the River Derwent and areas of land immediately adjacent to Rivers Ecclesbourne and where both Rivers confluence in the parish- see map.



### Culture Arts and Tourism

Duffield Castle aptly captures the significance of Duffield in medieval times. Built in the 11th century to protect the Royal hunting grounds of Duffield Frith, remnants of its existence are still evident today and English Heritage has listed it as a Scheduled Ancient Monument (SAM). Other significant historic sites and buildings include St. Alkmunds Church built in the 12th century, Duffield Bridge built in the 13th Century, Duffield Hall built in 17th century and Duffield Boys' Endowed School, now known as the William Gilbert School established in 1565. These buildings and many others capture the cultural heritage of the local area.

### Leisure Arts and Recreation

**Leisure Centres:** 0

**Libraries:** 1

**Museum:** 0

**Parks and Gardens:** The residents of Duffield have good access to open spaces for recreation however there is only one park with facilities for children and young people.



**Figure 23: Recreation Sites**

<b>Parks &amp; Gardens</b>	<b>Natural green spaces</b>	<b>Green Corridors</b>	<b>Outdoor Sports Facilities</b>	<b>Amenity Green space</b>	<b>Children/Young People</b>	<b>Civic spaces</b>	<b>Allotments</b>
4	0	2	2	0	1	0	2

**Green Flag Awards: 0**

**Recycling Facilities: 1**

Bridge Inn, Duffield Bank.

## Summary

- **Housing:** House prices are significantly higher than the rest of the Borough; the majority of dwellings are detached with 6.2% of dwellings in disrepair.
- **Retail:** There is low to moderate retail provision.
- **Facilities:** Duffield has one pharmacy and a medical centre, however it is in close proximity to Derby and Belper.
- **Education:** There is one secondary school with two primary schools; pupils are achieving better GCSE results compared to the Borough average.
- **Health:** The residents of Duffield have an above average life expectancy for the Borough.
- **School Admissions 2013/14:** Primary School places - 80. Secondary School places – 210.
- **Population:** 37% of the population is aged between 30 and 59 with the majority of the population of Christian belief. Nearly a third of the households are single person households.
- **Deprivation:** The residents of Duffield live in the least 10% deprived neighbourhoods in the Borough.
- **Transport:** Duffield is quite well served by public transport with six bus services and an hourly train service to Nottingham.
- **Crime:** Duffield has one of the lowest crime rates within the Borough.
- **Employment:** There are no designated employment areas in Duffield.
- **Built Environment:** Duffield has two conservation areas; Duffield and Duffield Bank.